

BRENNER

1240

**WHEEL
BULLDOZER**



BRENNER[®]

- **Economy and power**
- **Agility and operating speed**
- **Protection and durability**
- **Safety and ergonomics**

INTRODUCTION OF PRODUCT

BRENNER wheel bulldozers are combine the production capabilities of track-type crawler bulldozers with the mobility of wheel loaders. The excellent maneuverability of wheeled bulldozers allows you to perform a very wide range of tasks.

The **BRENNER 1240** wheel bulldozer is designed for layer-by-layer digging, planning and moving of large quantities of soil, minerals and other materials. The wheel bulldozer is used in the development of placers, on dumps and as an auxiliary machine in quarries. The main futures of the **BRENNER 1240** wheel dozer are mobility, maneuverability and versatility.

Ease of operation and maintenance, reliability are the main criteria for the production of **BRENNER** bulldozers.





ECONOMY AND POWER

Reliable and durable diesel engine SC11CB240 brand SHANGHAI DIESEL (SDEC) is a direct "descendant" of the legendary Caterpillar 3306 engine produced in the United States. In 2006, the engine underwent a complex modernization together with engineers from FEV (Germany), its energy characteristics were improved, fuel consumption and air emissions were reduced.

The BRENNER 1240 wheel bulldozer is equipped with a power-shift transmission made using CATERPILLAR technology. The planetary gearbox of a wheel dozer increases the momentum of inertia when driving on slopes, thereby significantly reducing fuel consumption by ensuring that this momentum is maintained when changing gears. The simple and reliable planetary gearbox of the BRENNER bulldozer is designed for heavy duty applications.

AGILITY AND OPERATING SPEED

The articulated frame with separated upper and lower joint plates guarantees the machine's stability to loads and is an important factor in machine performance and the service life of the joint. In addition, the increased distance between the plates greatly facilitates access for the service of the articulated joint.

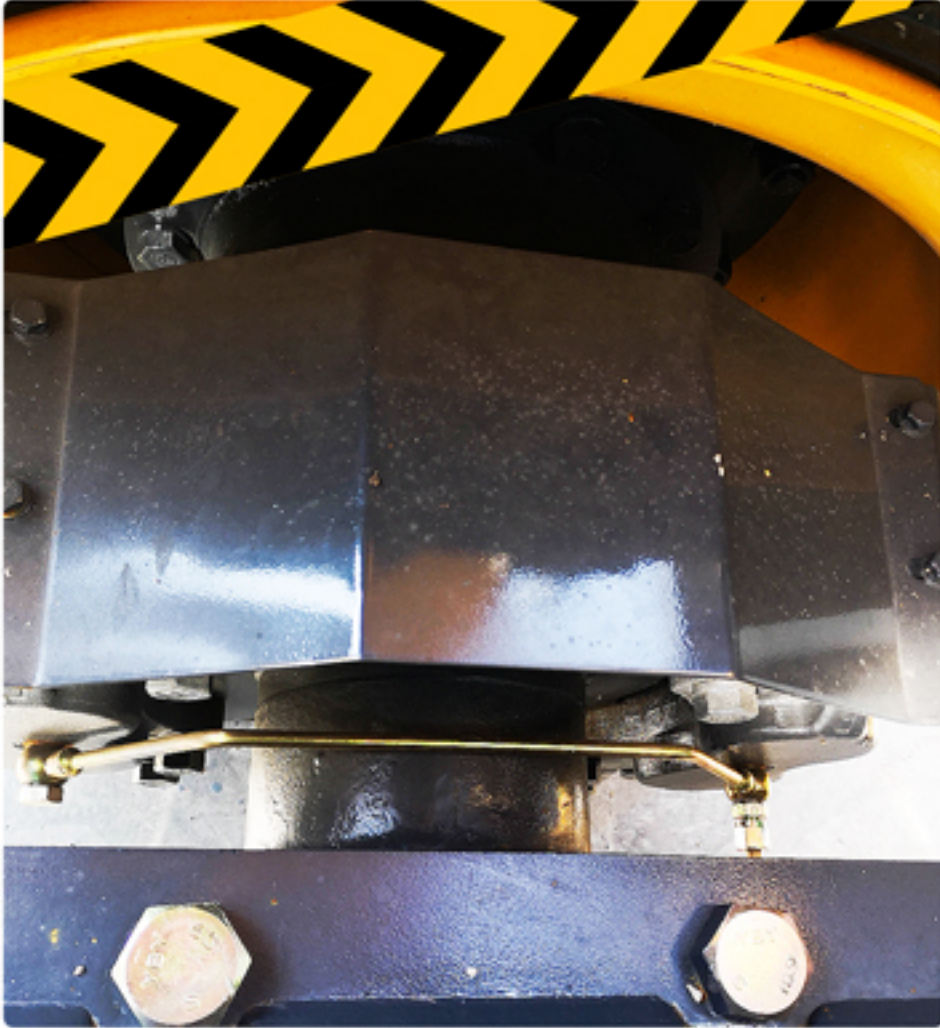
The reinforced front frame provides reliable fastening of the front axle, steering cylinders, blade lift cylinder and bulldozer equipment assembly. The welded structure, reinforced with additional steel plates, reliably transfers the loads arising from the operation of the bulldozer. The cross bar of the longitudinal beams is firmly bolted to the front frame.



BRAKE SYSTEM

The brake system of the BRENNER 1240 wheel bulldozer is equipped with disc brakes with excellent cooling. To ensure smooth and intensive braking, two calipers are installed on each wheel.

The brake calipers are equipped with special protection to avoid entering small parts of the rock.



PROTECTION AND DURABILITY

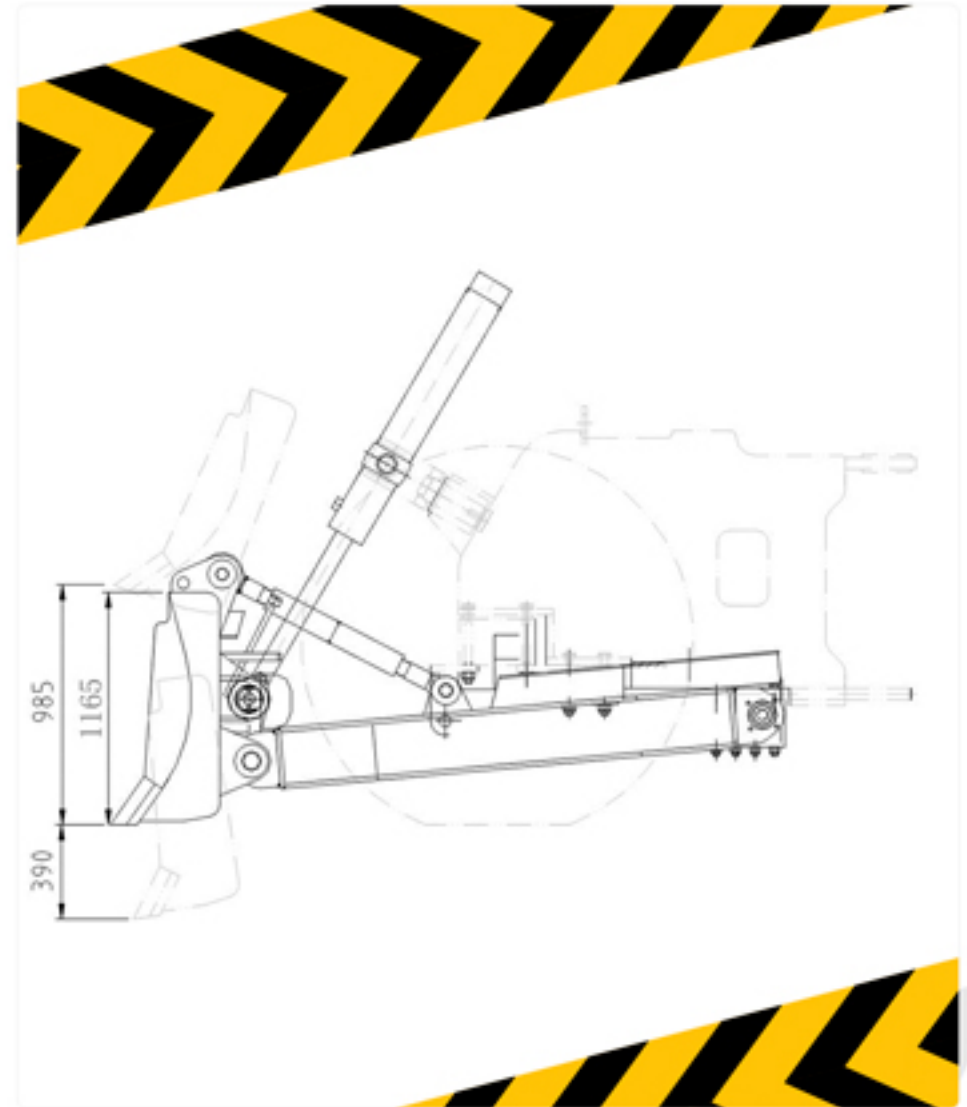
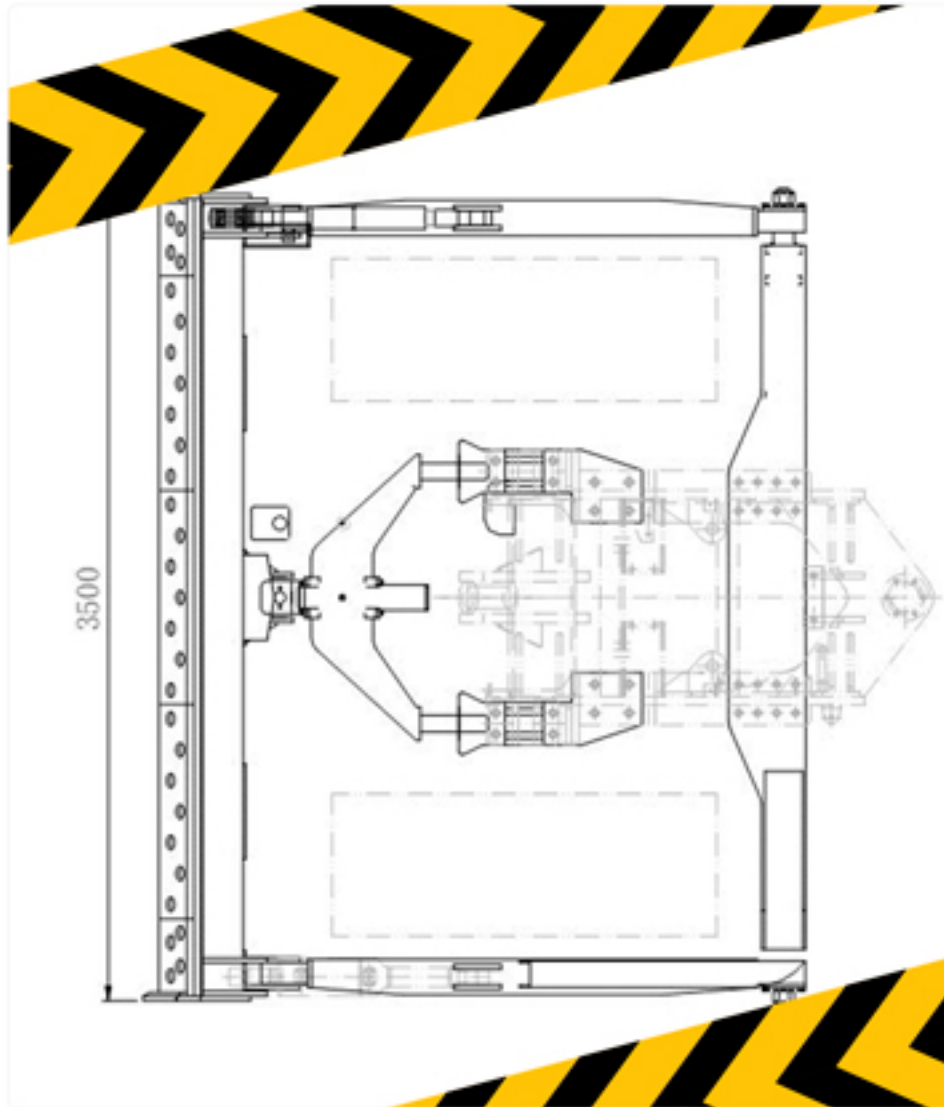
As standard, the BRENNER 1240 wheeled dozer is equipped with protective covers and boxes for hydraulic system elements, such as hydraulic hoses of the blade tilt cylinder.



WORK EQUIPMENT

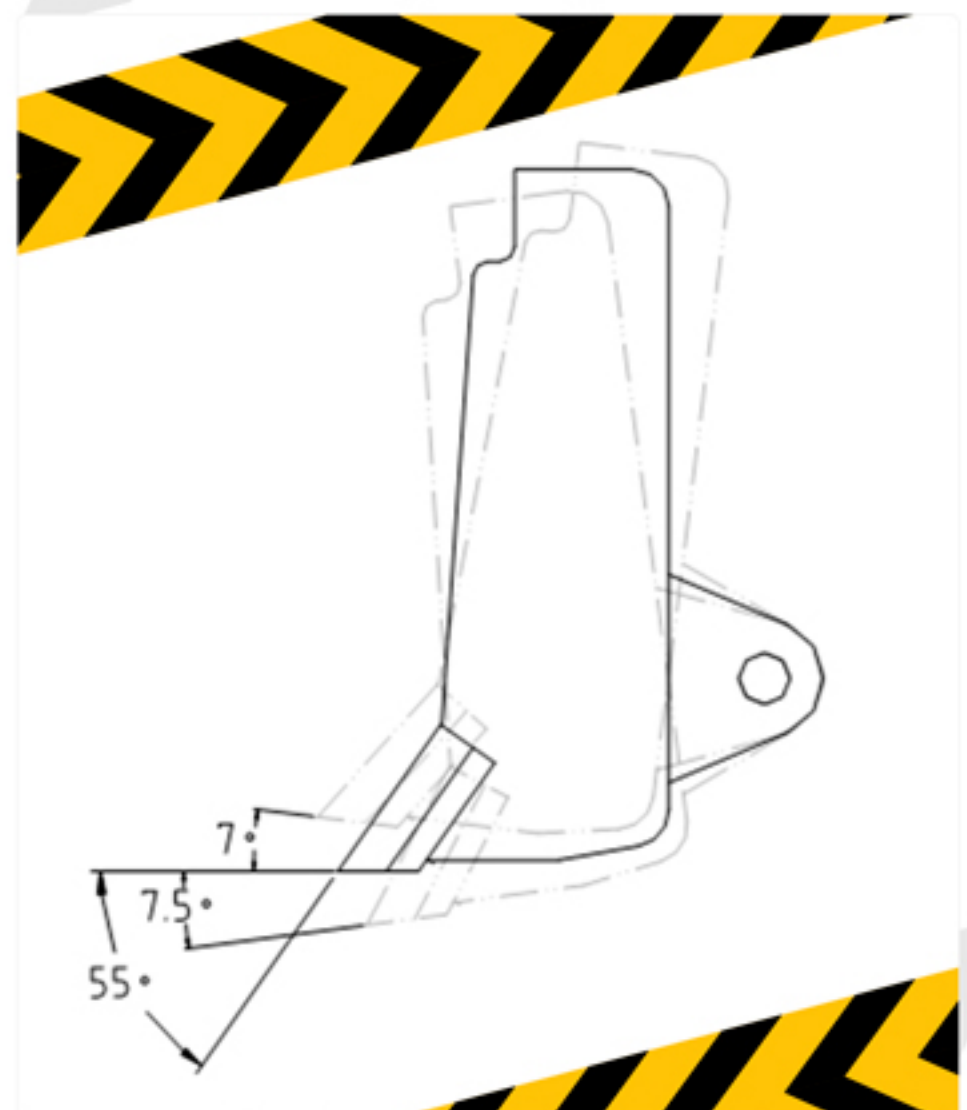
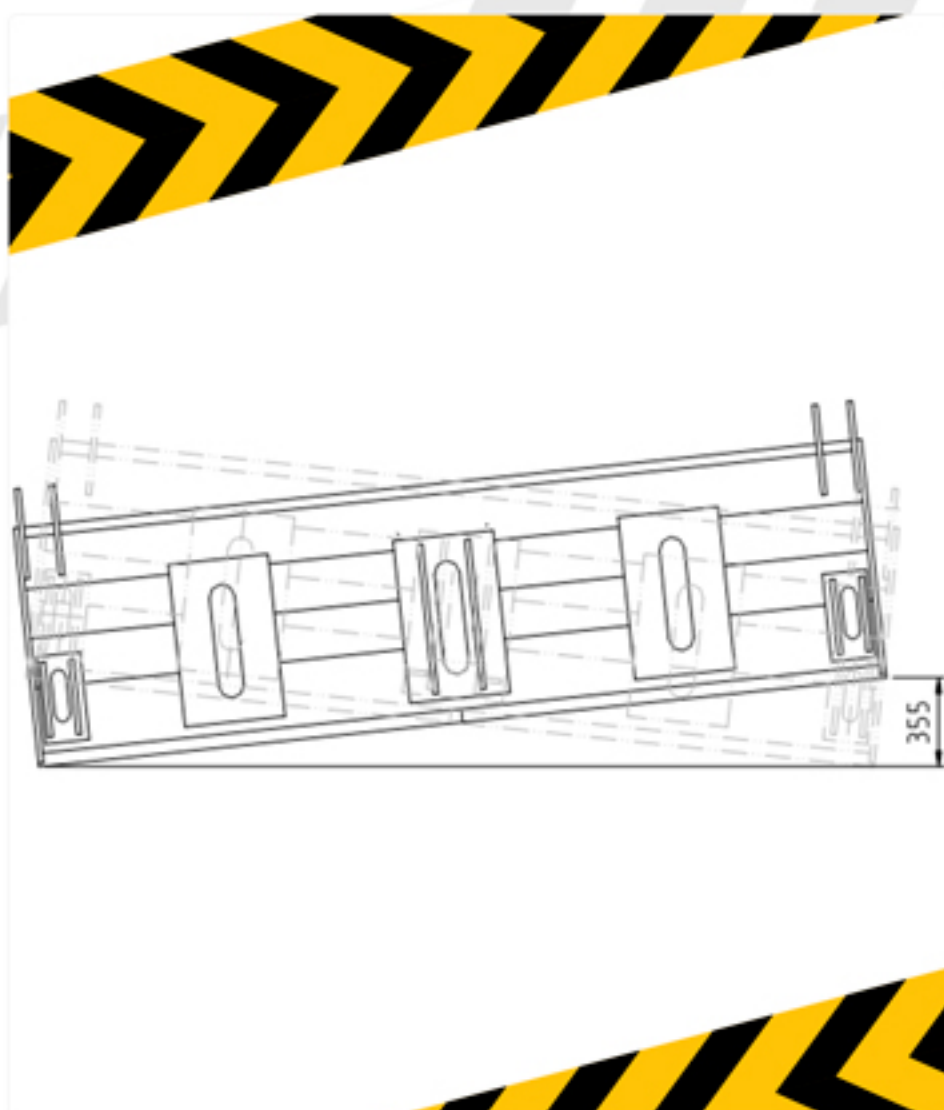
The bulldozer blade of the BRENNER 1240 wheel dozer has a width of 3500 mm and is equipped with hydraulic cylinders for lifting and tilting the blade. Replaceable blade cutting edges have a split design for easy replacement and maintenance.

The height of the dozer blade of the BRENNER 1240 wheeled dozer is 1165 mm. Lifting height from the ground level is 985 mm, the depth of the descent into the ground is up to 390 mm.



The dozer equipment has a hydraulic tilt function. The tilt level is 355 mm. It can be tilted on a right or a left side.

The angle of inclination of the dozer blade of BRENNER 1240 wheel bulldozer is between 7.5° forward and up to 7° backward. The cutoff angle of the ground is 55°.



CONTROL

The steering is traditional, from the steering wheel the rotation through the steering column goes to the flow amplifier, and then, through the hydraulic circuit, to the steering hydraulic cylinders. The maximum rotation of the machine is achieved when folding the half-frames at 35°. At the right side of the steering wheel is a turn signal switch. On the left are the transmission control levers.

The dashboard contains indicators for engine speed, battery charging voltage, pressure in the pneumatic brake system, engine and gearbox oil temperature. Below the steering wheel, there are buttons for turning on the headlights, working lights, heater, fan and windshield wiper.

The dozer blade control joystick has two degrees of freedom: forward / backward - raising and lowering the blade, left / right - blade tilt. The joystick also has a floating blade position function.



SAFETY AND ERGONOMICS

The bulldozer comes standard with handrails and ladders with non-slip surfaces to increase the safety of the operator and maintenance personnel.

The operator always has a minimum of three points of contact when lifting and lowering from the machine.



The sealed cab with low vibration and noise levels is equipped with a comfortable operator's seat with an armrest, headrest, backrest tilt adjustment, runners for horizontal adjustment, as well as stiffness adjustment depending on the operator's body weight.

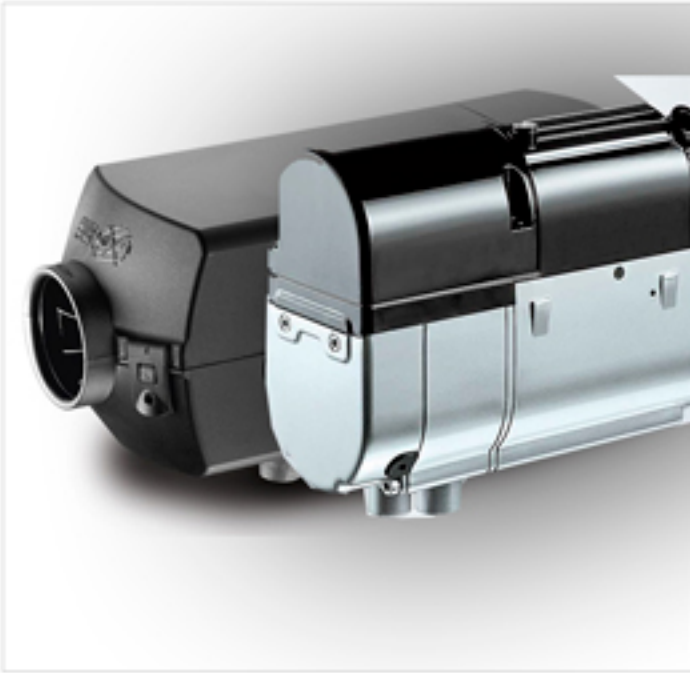


Side mirrors provide excellent visibility while driving. Top mounted work lights provide excellent visibility to the job-site.



ADDITIONAL AND OPTIONAL EQUIPMENT

Cab heater



Engine cold start system



Tire protection chains



Automatic fire extinguishing system for the engine compartment with an additional button in the operator's cab



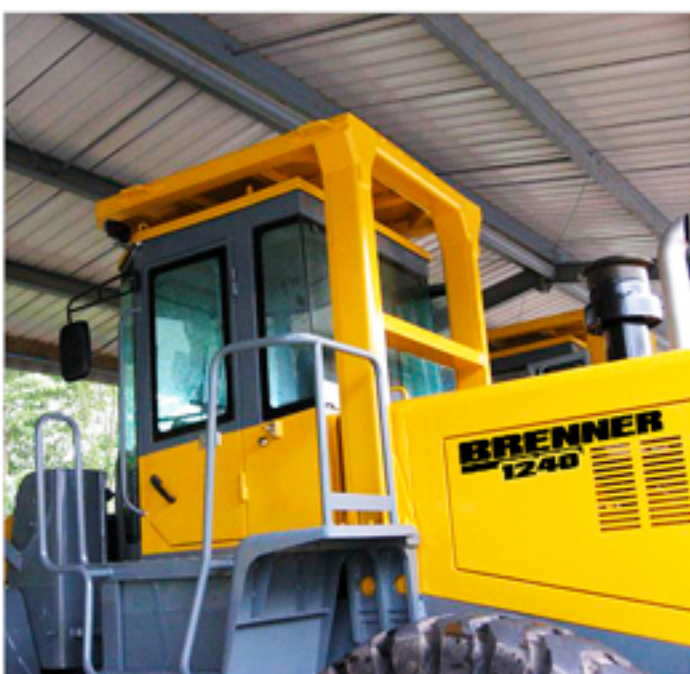
Rear view video system. Includes a rear view camera and a 7-inch monitor in the operator's cab



Protective grilles on the cab windows



ROPS / FOPS protection device
ROPS - Roll Over Protective Device
FOPS - Falling Object Protection System



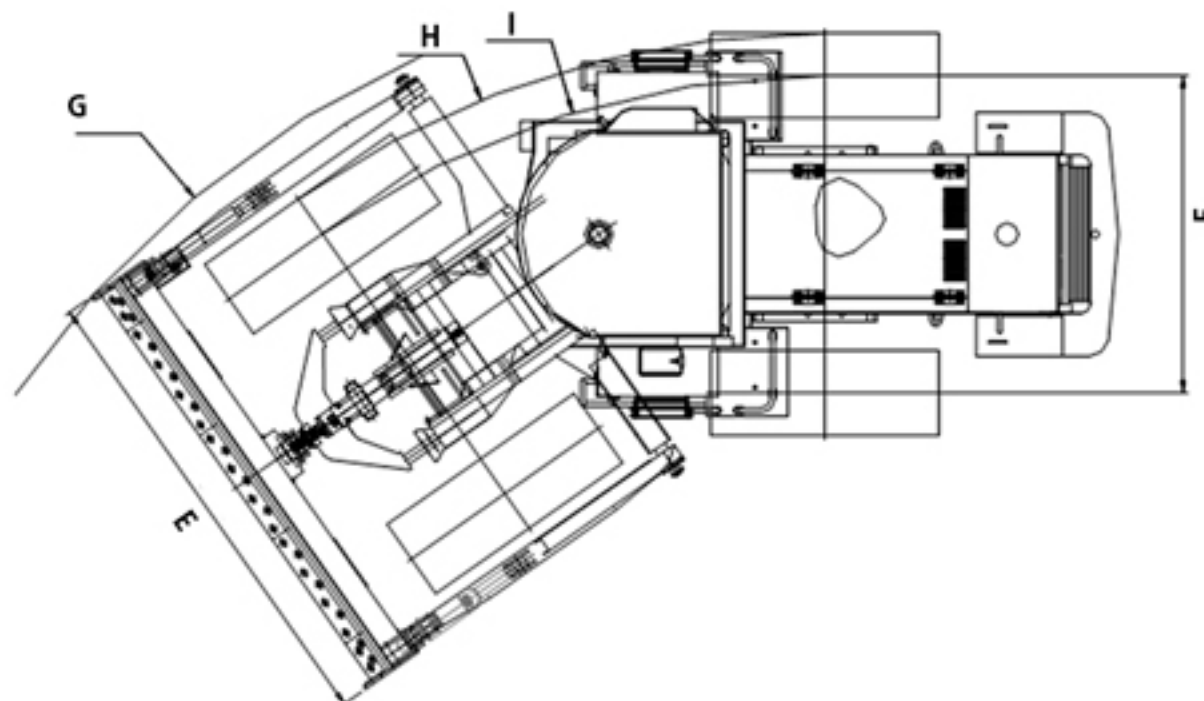
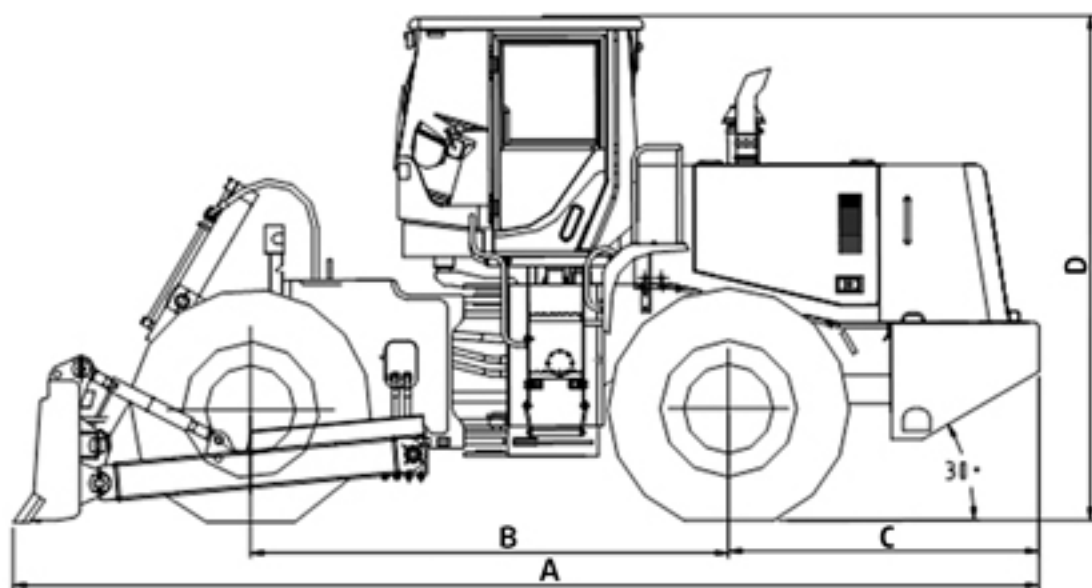
Automatic centralized lubrication system



Additional air filter in oil bath






SPECIFICATION



BLADE CHARACTERISTICS		
Dozer blade capacity, m ³		3.5
Blade width, mm		3500
Blade height, mm		1165
Descent into the ground, mm		390
Blade lifting height, mm		985
Blade tilt (Right, Left), mm		355
Cutoff angle, °		55
Maximum inclination angle forward, °		7.5
Maximum inclination angle backward, °		7
Maximum tilt angle, °		10
BULLDOZER CHARACTERISTICS		
Lenth, mm	A	6870
Width, mm	E	3500
Height, mm	D	3560
Working weight, kg		19200
Wheelbase, mm	B	3300
Track, mm	F	2250
Gradeability, °		30
Clearance, mm		310
Minimum turning radius, mm	G	6675
Maximum tractive force, kN		160
Working ambient temperature, °C		-30 ~ +45
Working altitude above sea level, m		0 - 4000
Speed (forward / backward) 1st gear, km/h		0 - 8
Speed (forward / backward) 2nd gear, km/h		0 - 15
Speed (forward / backward) 3rd gear, km/h		0 - 25
Speed (forward / backward) 4th gear, km/h		0 - 40
Engine		Diesel, water-cooled, 4-stroke, 6-cylinder in-line, direct injection, turbocharged
Engine model		SC11CB240
Engine capacity, l		9.727
Engine power, kW / HP		175 / 240
Rated speed, r/min		2200
Minimum fuel consumption, gr / kW * h		215
Maximum torque, Nm		908
Torque converter		YJ375
Torque converter type		Single stage three element
Transmission		Full-powershift, countershaft type
Gear Shift Position (Forward / Backward)		4 Forward and 4 Reverse gears
Tire size		TRIANGLE 23.5-25 L-3 20PR career type, reinforced



www.brenner-machinery.com
info@brenner-machinery.com

 BRENNER MACHINERY
 [brenner_machinery](#)
 [brenner_machinery](#)

