

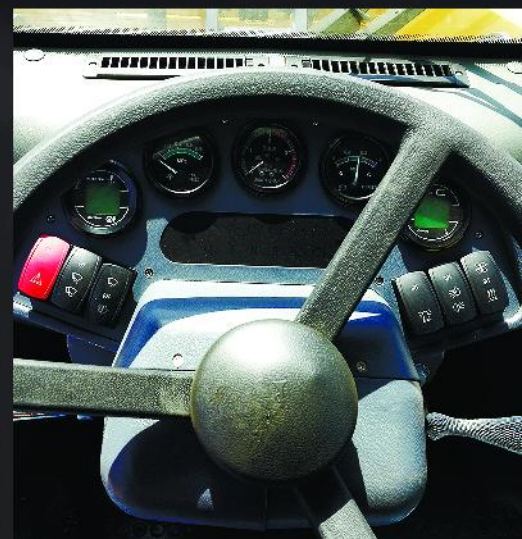
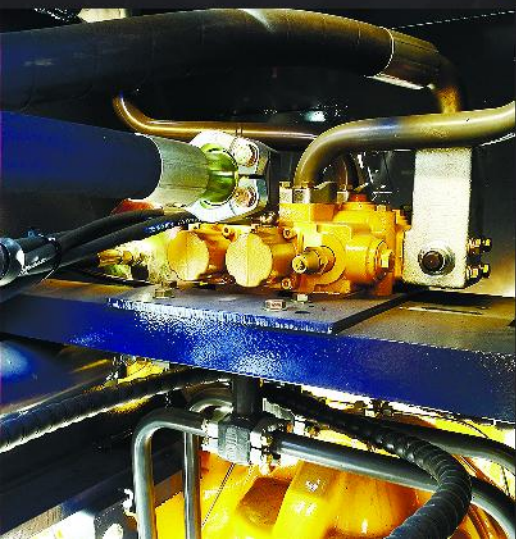
BRENNER 956

WHEEL LOADER



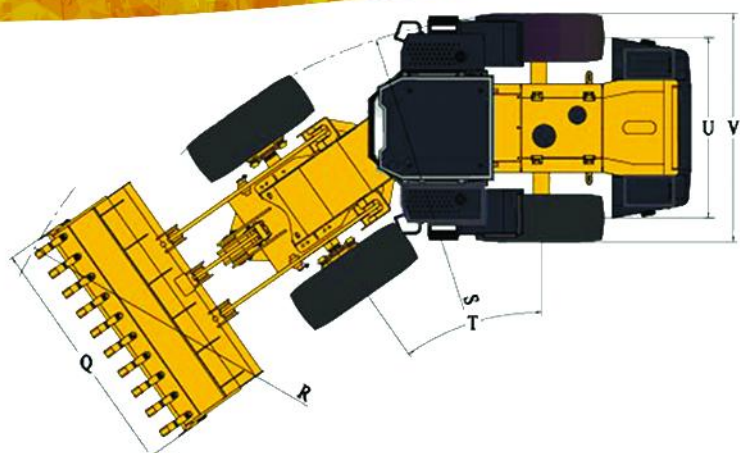
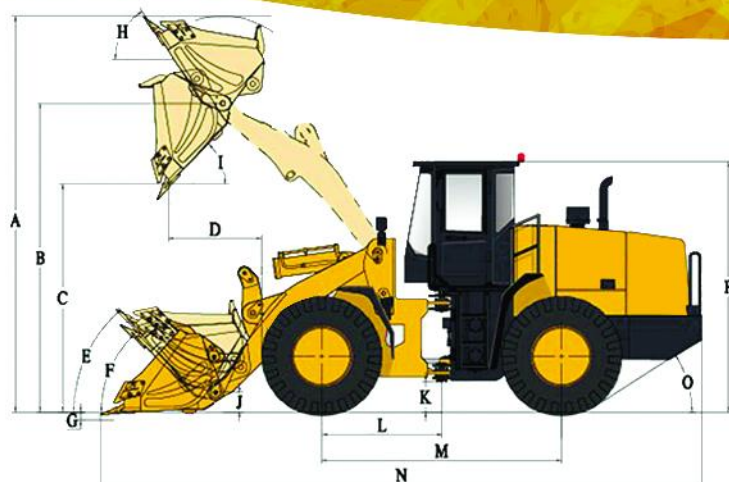
PRODUCT ADVANTAGE

- **High Productivity**
- **Best-in-class Reliability and Durability**
- **Excellent Fuel Economy**
- **Outstanding Operator Comfort**



BRENNER 956

MAIN SPECIFICATION



OVERALL DIMENSION

Length (with bucket on ground)	N	7755 mm
Width (to outside of wheels)	V	2845 mm
Bucket Width	Q	3025 mm
Height (to the top of the cab)	P	3425 mm
Wheel Base	M	2920 mm
Track	U	2250 mm
Min. Ground Clearance	K	535 mm

MAIN TECHNICAL SPECIFICATION

Rated Load		5000 kg
Operating Weight		16600 kg
Rated Bucket Capacity		3.0 m ³
Max. Tractive Force		150 KN
Max. Breakout Force		160 KN
Max. Dumping Height	C	3250/3450 mm
Height to Bucket Hinge Pin	B	4080/4200 mm
Dump Reach	D	1148 mm
Dump Angle	I	45°
Min. Turning Radius:		
outside of bucket	R	6888 mm
outside of rear wheel	S	6201 mm
Max. Turning Angle	T	35°
Boom Lifting Time		5,8 s
Total Cycle Time		10,3 s
Max. travel speed		38 km/h
Max. Gradeability	O	29°

OIL CAPACITY

Type of Fuel		Diesel fuel
Engine Oil		20 L
Gear Oil for T/C and G/B		45 L
Hydraulic Oil		270 L
Fuel Tank Capacity		270 L

ENGINE AND TRANSMISSION

Engine Model		WD10G220E21
Engine Type		Diesel, watercooled, 4 stroke, 6 cyl. in line, direct injection, turbo charged
Rated output		162 / 220 kW / HP
Rated speed		2200 r/min
Max. Torque		860 Nm
Engine Capacity		9726 cm ³
Emission Standard		Type 2
Torque Converter Type		Single phase, 4 elements, 2 turbo
Gear Box Model		Hangzhou Advance ZL50B-030
Gear Box Type		Planetary powershift
Gear Shift Position		4 Forward and 2 reverse gears
System Working Pressure		18 MPa

AXLE AND TYRE

Type of Main Reducer		Single stage spiral bevel gear
Type of Final Drive		Single stage planetary reducer
Tyre Size		23.5-25
Steering System		Middle articulated frame, full hydraulic power

BRAKE SYSTEM

Type of Traveling Brake		Air assisted oil disc type on four wheel brake
Parking Brake		Manual disk type

Extra kit		Rearview camera Cabin heater Windshield wiper and washer
-----------	--	--

* the parameters are subject to change without notice

SERVICEABILITY

- System Pressure Test Ports are Standard
- Engine Hood Grill Opens for Easy Service Access
- Rotating hydraulic oil tank helps improve the maintenance

CONTACTS

Address: Chaoyang District, Wangjing West Road No.48, City One Plaza C-2501, Beijing, China

Phone: +86-10-64787904

Fax: +86-10-64787322

Site: www.brenner-machinery.com